



### 224 Plumpton Lane Carisbrook VIC

4 2 3

Set on approximately 100 acres in the heart of the Victorian Goldfields, Kooronga offers a rare opportunity to secure a lifestyle property combining character, productivity and space. A short distance from Carisbrook township and Maryborough regional centre of Victoria and within easy reach of Castlemaine, Bendigo, Ballarat and Melbourne, this is country living without compromise.

A classic California Bungalow anchors the property, showcasing beautiful leadlight windows, timber floors, high ceilings and multiple living zones with wood fires and reverse cycle split systems. With four bedrooms, a dedicated study and a light-filled sunroom overlooking the gardens and paddocks, the home delivers both comfort and flexibility for family living or working from home.

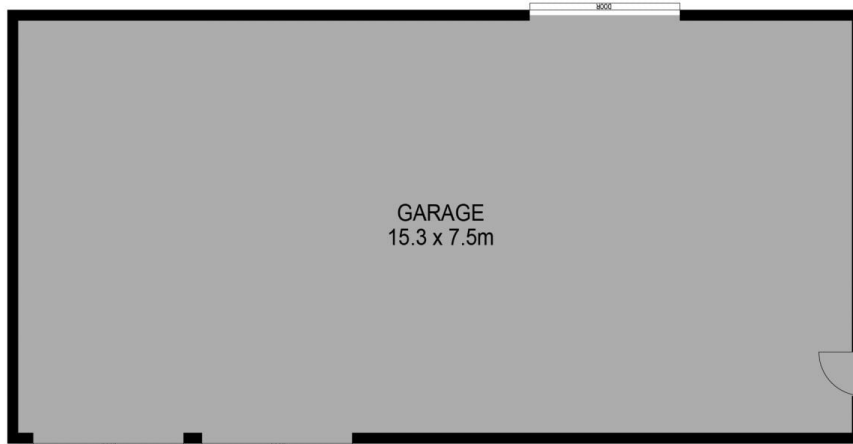
**Price** : \$1,270,000

**Land Size** : 100 Acres

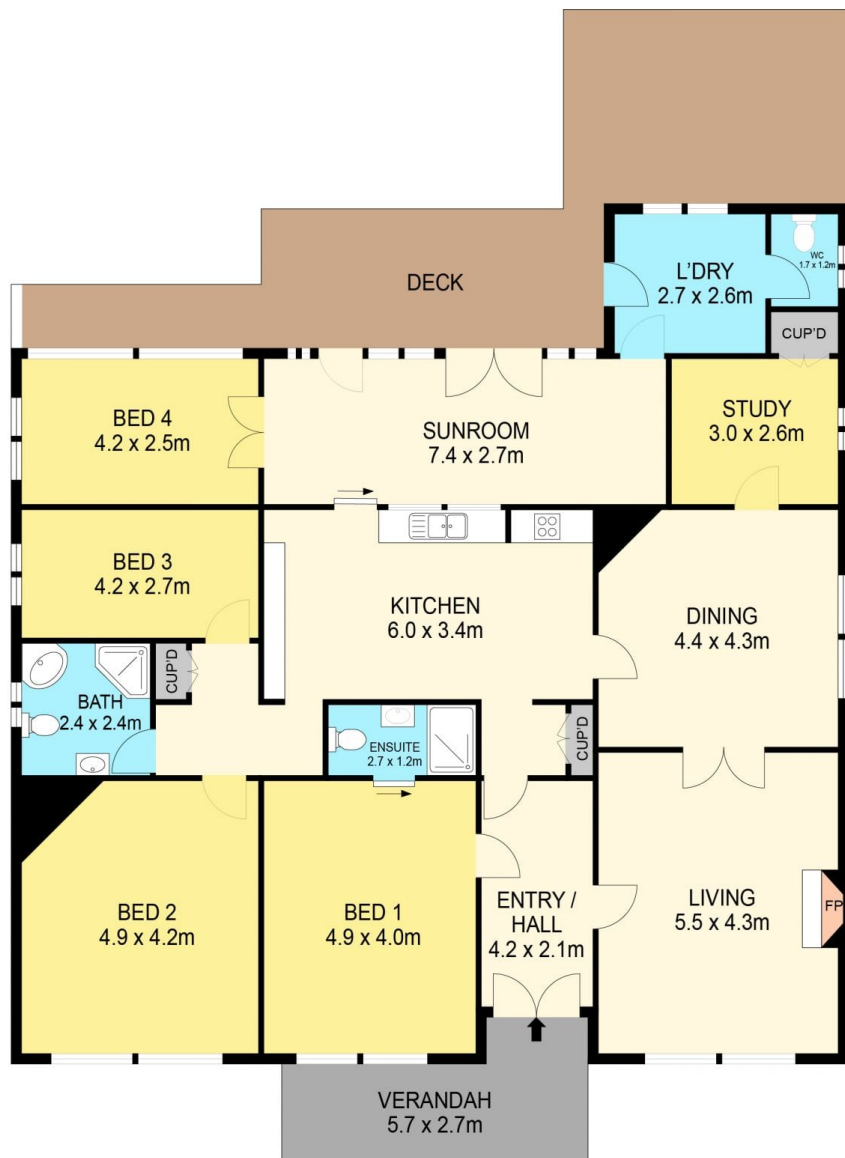
**View** : <https://www.maryboroughballaratrealstate.com.au/sale/vic/greater-bendigo-region/carisbrook/residential/house/8692267>



**Kate Ashton**  
0418 521 346



(NOT IN POSITION)



**DISCLAIMER**

PLANS SHOWN ARE FOR MARKETING PURPOSES ONLY. ALL DIMENSIONS ARE APPROXIMATE AND NOT TO SCALE. THEY ARE SUBJECT TO ERRORS AND INACCURACIES AND NO LIABILITY WILL BE ACCEPTED. INTERESTED PARTIES SHOULD MAKE THEIR OWN INQUIRES.

Maryborough

