



### 1/175A Park Road Maryborough VIC

3 2 1

Backing directly onto the Maryborough Golf Course, this private, tucked-away modern brick veneer home combines stylish design, bright open living space, and functional features in a highly sought-after location.

? Bright & Open Living Space: The open-plan kitchen, dining, and lounge areas create a spacious, light-filled environment, complete with views of the picturesque Maryborough Golf Course

? Outdoor Entertaining: Step outside to a fully fenced alfresco area, perfect for entertaining, outdoor relaxation or watching the sunset over the golf course.

? Stylish Kitchen: The island bench with a double sink and the 900mm upright cooker provide generous space for

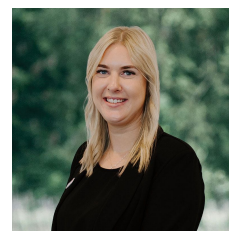
**Price** : \$ 400,000

**Land Size** : 280 sqm

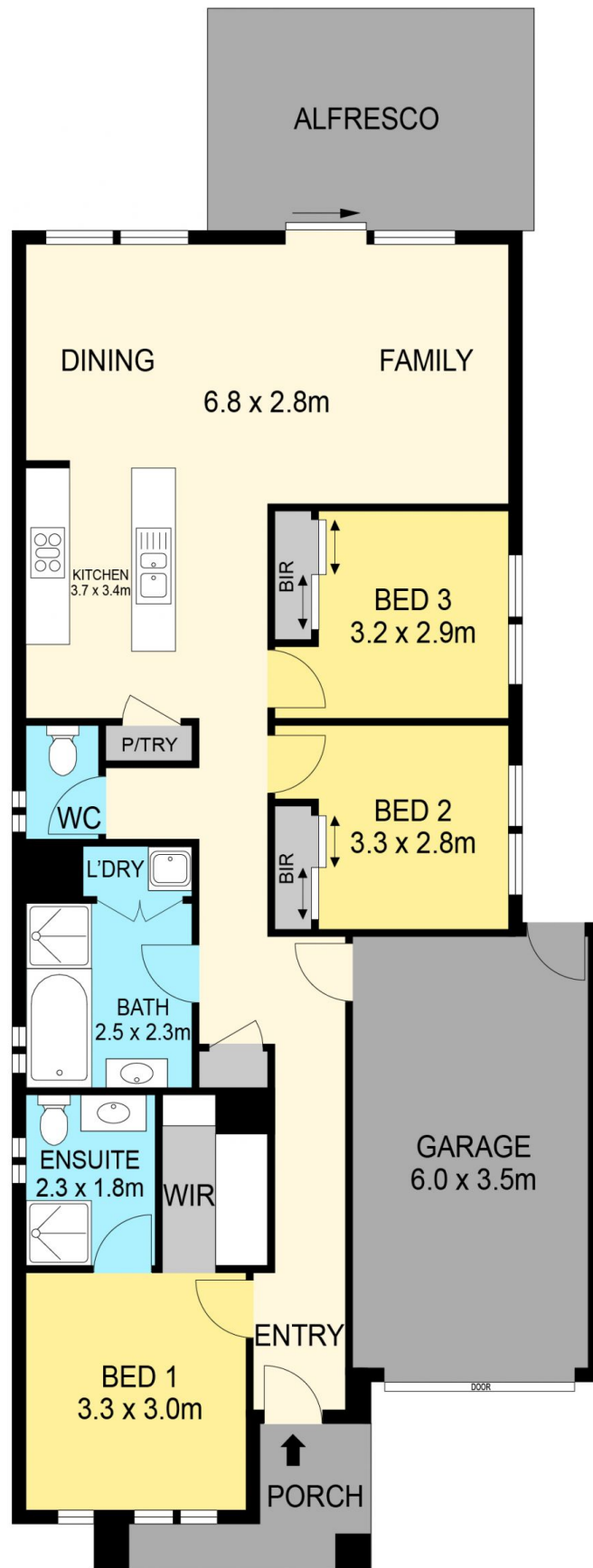
**View** : <https://www.maryboroughballaratrealstate.com.au/sale/vic/ballarat-western-district/maryborough/residential/house/8110216>



**Kate Ashton**  
03 5460 5100  
0418 521 346



**Sandi Grogan**  
03 5460 5100  
0431 455 969



**DISCLAIMER**

PLANS SHOWN ARE FOR MARKETING PURPOSES ONLY, ALL DIMENSIONS ARE APPROXIMATE AND NOT TO SCALE. THEY ARE SUBJECT TO ERRORS AND INACCURACIES AND NO LIABILITY WILL BE ACCEPTED. INTERESTED PARTIES SHOULD MAKE THEIR OWN INQUIRIES.

Maryborough

