

Maryborough



2/29 Alma Street Maryborough VIC

2 1 1

Situated in an ideal location, this low-maintenance brick veneer townhouse is in walking distance to local amenities

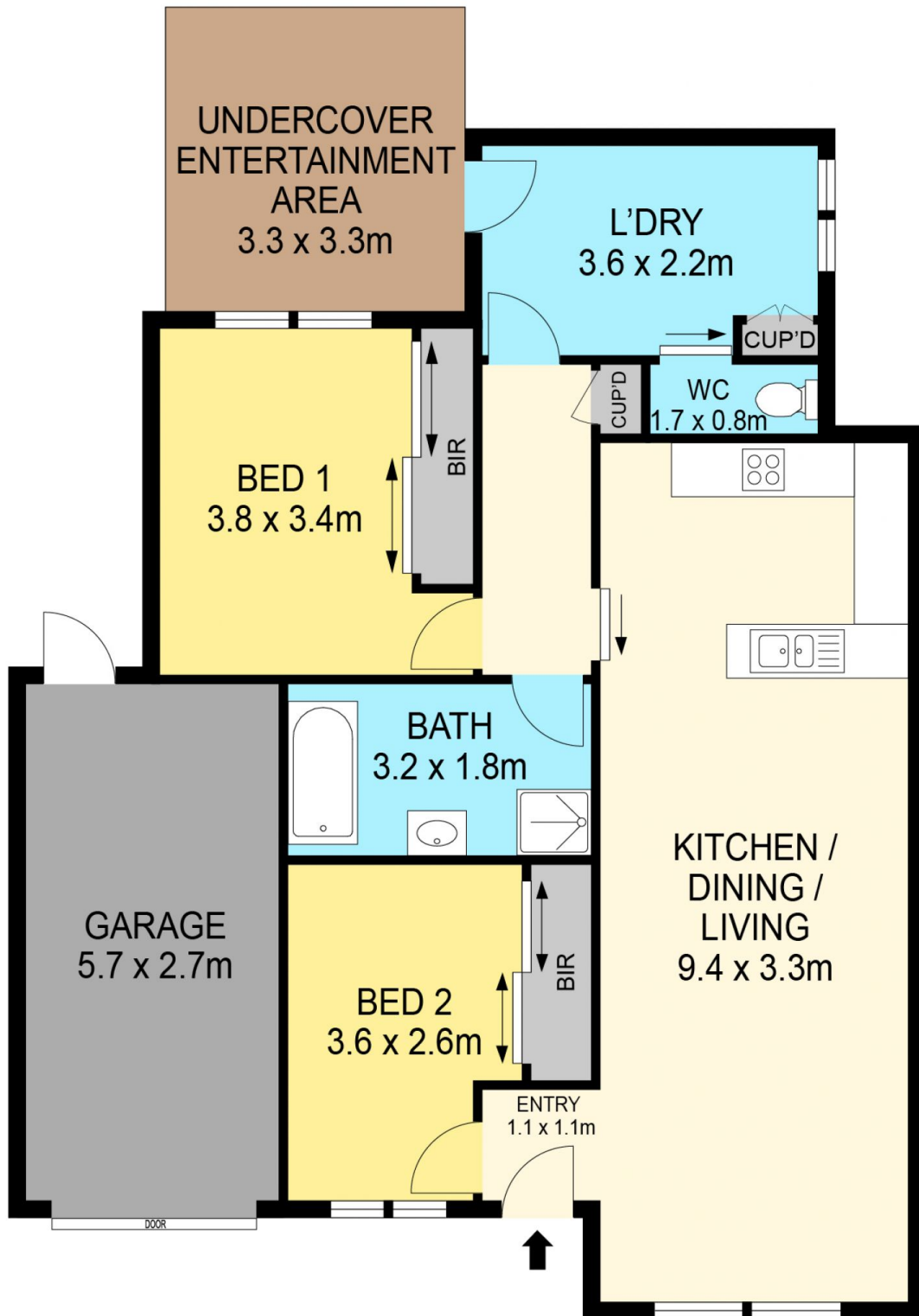
The floorplan consists living, dining and kitchen boasting a Rinnai gas heater, split system. This home also has ducted evaporative cooling throughout. The kitchen offers a gas cooktop, electric oven and storage and bench space.

A ramp leads down to the established back yard with a garden shed and water tank. There is a single remote lock-up garage for car storage.

Land Size : 257 sqm
View : <https://www.maryboroughballaratrealstate.com.au/lease/vic/ballarat-western-district/maryborough/residential/house/7572091>



Lachlan Steed
03 5460 5100



DISCLAIMER

PLANS SHOWN ARE FOR MARKETING PURPOSES ONLY. ALL DIMENSIONS ARE APPROXIMATE AND NOT TO SCALE. THEY ARE SUBJECT TO ERRORS AND INACCURACIES AND NO LIABILITY WILL BE ACCEPTED. INTERESTED PARTIES SHOULD MAKE THEIR OWN INQUIRES.

Maryborough

